



3/10 Louise Street Clifton Hill VIC

 3
  2
  1

### Big, Bright & Peaceful...

In an attractive & secure complex with Yarra Bend parkland on your doorstep, this spacious pad has the right ingredients for you to call it home & to call your friends for some summer fun in this happening location surrounded by convenience.

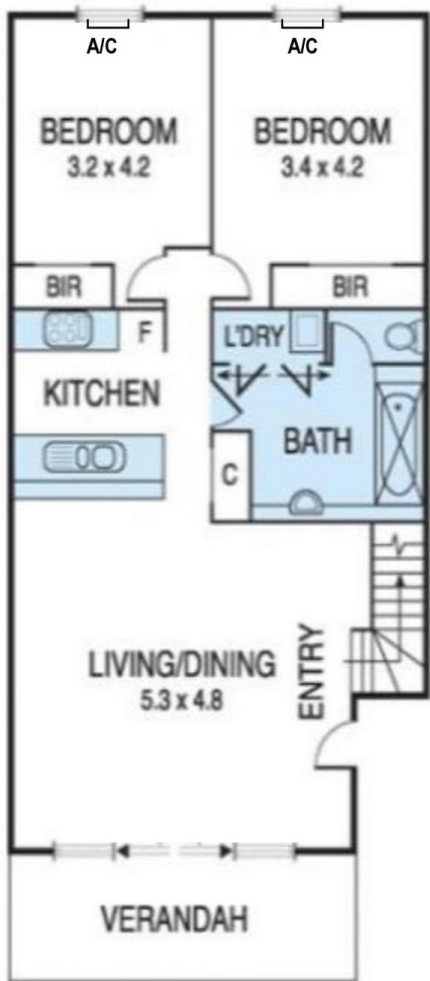
You will be greeted by cathedral ceilings, the lower level incorporates two bedrooms with robes, a central bathroom with a bathtub, well-appointed kitchen, and an open plan living/dining area with lovely natural light and your own peaceful balcony. Your excitement will continue on the upper level with a standout master bedroom that offers its own ensuite and open study area.

Nice surprises & necessities include: Split system heating/cooling in each bedroom, dishwasher, intercom and secure undercover car space.

You Will Love Living Here...

**Type** : Townhouse  
**Date Available** : Thursday, 13th October 2022  
**View** : <https://www.thebisiagent.com.au/lease/vic/inner-city/clifton-hill/residential/townhouse/7237614>

**Northcote Rental Department**  
 03 9489 1030



First Floor



Second Floor