



18 Sylvan Street Montmorency VIC

 4
  2
  3

### A Palatial Entertainer's Paradise?

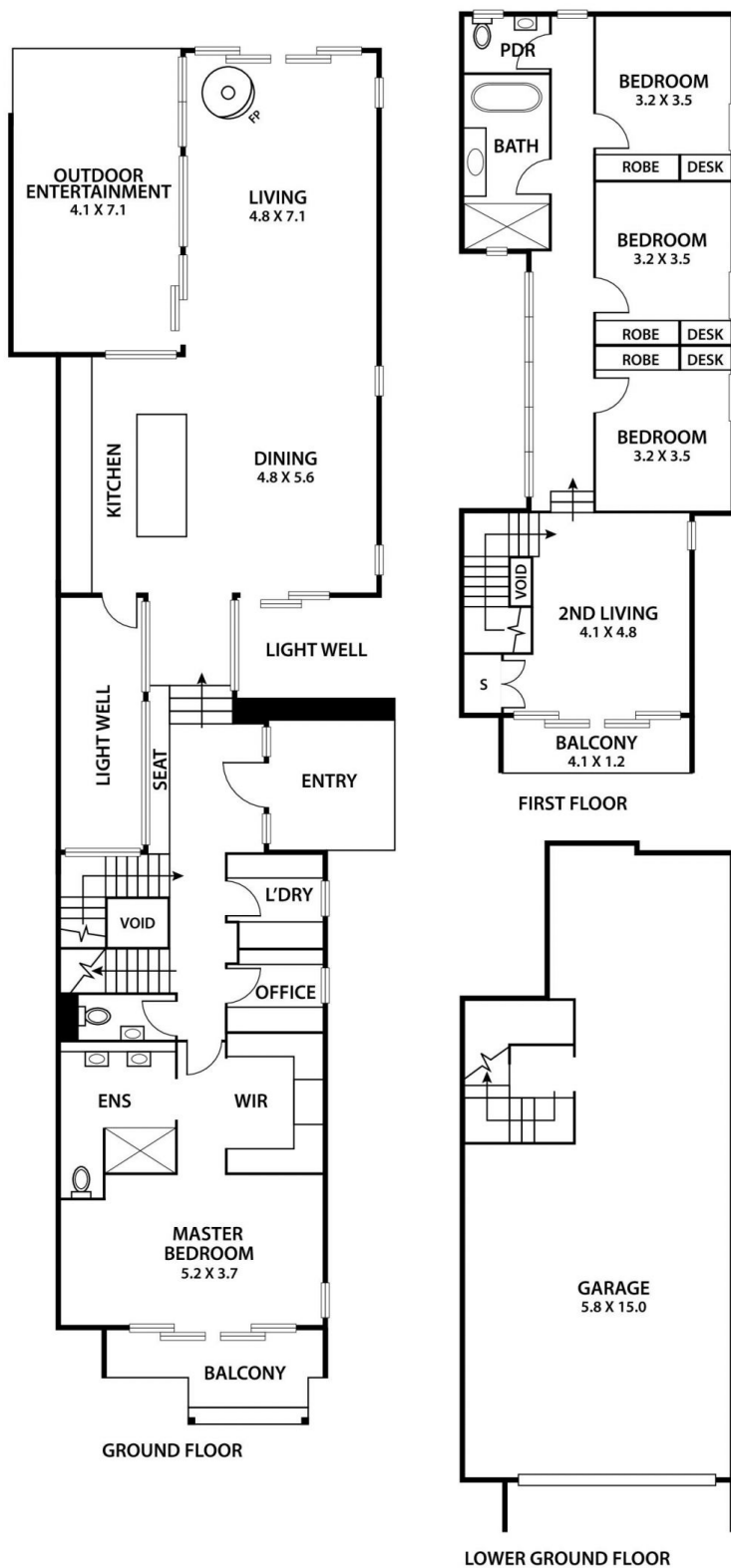
Destined to be the iconic home of this prestigious and highly sought-after family-oriented location, this show home reveals seriously slick interiors and superior design credentials to an exceptional detail. This masterpiece truly represents the ultimate family lifestyle for entertaining, conveniently placed in the right zone for good schools, local shopping and picturesque Sylvan Reserve.

Floor to ceiling windows dominates the lower level of this home, showing off the very second you step in. Wander through and you are in the heart of the property, which impresses with vast living and dining areas which all overlook and flow directly to the great outdoors. The crowning glory of this level is the exclusive stunning kitchen, which will impress all home chefs with its oversized island bench. The lower level also reveals a stunning independent master bedroom retreat which enjoys its own outdoor area and seamlessly connects the dressing area & ensuite perfectly. Host to this level is also a dedicated

**Type :** House

**View :** <https://www.thebisiagent.com.au/sale/vic/north/montmorency/residential/house/7596494>

**John Bisignano**  
03 9489 1030



THE ABOVE PLAN IS AN ARTIST'S IMPRESSION ONLY, IT INCLUDES ELEMENTS THAT ARE FOR YOUR DISPLAY PURPOSES ONLY AND MAY NOT BE TO SCALE. LANDSCAPING SHOWN IS INDICATIVE ONLY. DIMENSIONS ARE APPROXIMATE.